

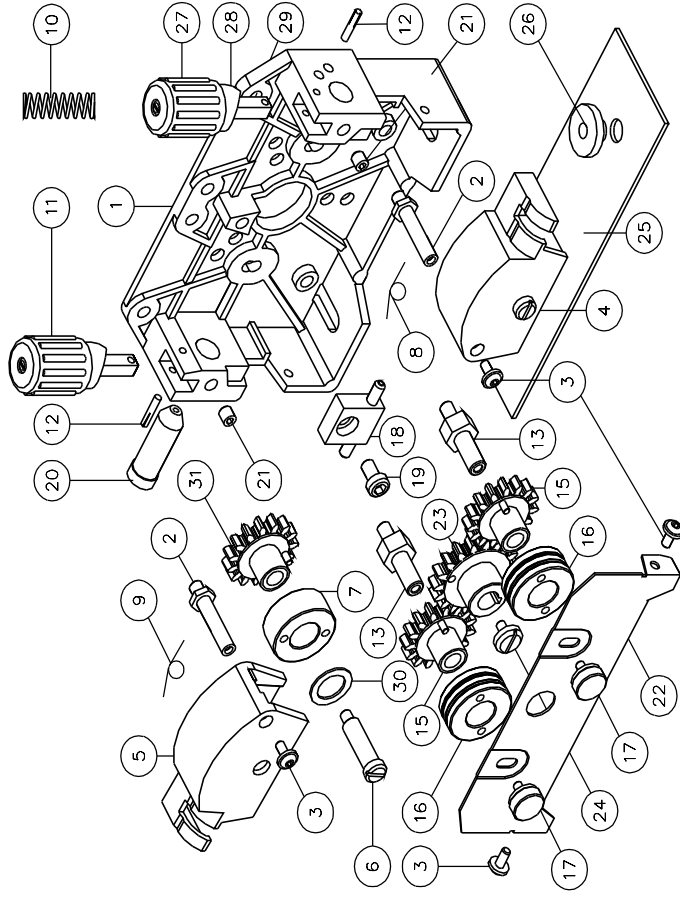
SwissFeed
Leading in Feeding

4 Rollen Drahtvorschub ø30mm
4 Roll Wire Drive System ø30mm

SF45030
Art. Nr. 857110

Vorschubrollen - Feed Rolls Ø30

Art.-Nr.	Draht	Drahtdurchmesser
Part-No.	Wire	Wire Size
35300608	Hartdraht	0.6 + 0.8 mm
	Hard Wire	0.6 + 0.8 mm
35300810	Hartdraht	0.8 + 1.0 mm
	Hard Wire	0.8 + 1.0 mm
35301012	Hartdraht	1.0 + 1.2 mm
	Hard Wire	1.0 + 1.2 mm
35301416	Hartdraht	1.2 + 1.6 mm
	Hard Wire	1.2 + 1.6 mm
36301012	Alu-Draht	1.0 + 1.2 mm
	Alu-Wire	1.0 + 1.2 mm
36301216	Alu-Draht	1.2 + 1.6 mm
	Alu-Wire	1.2 + 1.6 mm
37301016	Rohr-Draht	1.0/1.2 + 1.4/1.6 mm
	Tube-Wire	1.0/1.2 + 1.4/1.6 mm
37302024	Rohr-Draht	2.0 + 2.4 mm
	Tube-Wire	2.0 + 2.4 mm



Pos. Item	Anz. Qty.	Art.-Nr. Part-No.	Bezeichnung	Description
1	1	22900	4R-Vorschubplatte Alu VR 30mm	4R-Feed Plate Alu FR 30mm
2	2	20002	Gelenkchase Druckarm	Axle Shaft Pressure Arm
3	4	24103	Linsenschraube mit Flansch	Fixing Screw
4	1	23004	Druckarm rechts	Pressure Arm right
4a	1	42026	Druckarm rechts komplett	Pressure Arm right complete
5	1	23005	Druckarm links	Pressure Arm left
5a	1	42027	Druckarm links komplett	Pressure Arm left complete
6	2	20045	Druckachse 'by hand'	Axle Pressure Arm 'by hand'
7	2	21030	Druckrolle 30mm	Pressure Roll 30mm
8	1	24400	Klappfeder rechts	Spring Pressure Arm right Side
9	1	24401	Klappfeder links	Spring Pressure Arm left Side
10	2	24404	Druckfeder	Pressure Spring
11	2	42000	Druckeinheit kpl.	Pressure Device compl.
12	2	24252	Passkerbstift Druckeinheit	Pin Pressure Device
13	2	20018	Achse zu Vorschubritzel	Axle to Geared Adapter
15	2	42015	Vorschubritzel	Geared Adapter

16	2	3530..	Vorschubrolle 30 mm	Feed Roll 30 mm	
17	2	20025	Befestigungsschraube	Fixing Screw	
18	1	42001	Mittlere Drahtführung 0.8-1.6mm	Interm. Guide Tube compl. 0.8-1.6mm	
18a	1	42002	Mittlere Drahtführung 1.6-2.4mm	Interm. Guide Tube compl. 1.6-2.4mm	
19	1	24100	Befestigungsschraube mittlere DF	Fixing Screw Intermediate Guide	
20	1	20021	Drahtlaufnippel Draht 0.6-1.6 mm	Inlet Guide Tube Wire 0.6-1.6 mm	
20a	1	20022	Drahtlaufnippel Draht 1.6-2.4 mm	Inlet Guide Tube Wire 1.6-2.4 mm	
21	2	24251	Gewindestift M6	Thread Plug M6	
22	1	23500	Abdeckblech	Safety Coverplate	
23	1	21001	Antriebsritzel	Main Gear	
24	1	20026	Befestigungsschraube Antriebsritzel	Fixing Screw Main Gear	
25	1	22001	Isolierplatte gross	Insulation Board large	
26	2	21506	Isolierhülse	Protection Sleeve	
27	2	21505	Druckkappe	Pressure Top	
28	2	21504	Druckkörper	Pressure Body	
29	2	20030	Zugstange	Connecting Bar	
30	2	20014	Distanzring	Spacer Ring	
31	2	20018	Druckritzel 30mm	Geared Pressure Adapter 30mm	

Schéma rozložení posuvu SF45030 pro ATA 350-500 PULS MM015-1					
Vypracoval: Worked out:	DJ 21/1/2010	Přezkoumal: Inspected:	DJ 21/1/2010	Schválil: Approved:	VS 21/1/2010