

**PLASMA CUTTING MACHINE**

**Ryval 40 PLASMA PFC ovo**

**OPERATING MANUAL**

## Content:

1.	INTRODUCTION .....	3
2.	SAFETY INSTRUCTIONS AND WARNINGS .....	4
2.1	ELECTROMAGNETIC COMPATIBILITY (EMC) .....	6
2.2	PROTECTIVE UTILITIES .....	7
2.3	RISK OVERVIEW .....	7
3.	CONDITIONS OF USE .....	7
4.	TECHNICAL DATA .....	8
5.	OPERATOR CONTROLS .....	9
5.1	FRONT AND REAR PANELS .....	9
6.	ACCESSORIES .....	10
6.1	PART OF DELIVERY .....	10
2.1	ON REQUEST .....	10
2.2	COMMENTS ON CONSUMABLES .....	13
3.1	FIRST STEPS .....	14
3.2	REQUIREMENTS FOR SOURCE OF COMPRESSED AIR .....	15
3.3	OPTIONAL AIR FILTERS .....	15
3.4	CUTTING .....	16
3.5	IMPORTANT RULES .....	17
3.6	SOURCES OF POOR QUALITY CUTS .....	17
4.	MAINTENANCE .....	18
5.	STATEMENT OF WARRANTY .....	19
6.	DISPOSAL .....	20

## 1. INTRODUCTION

Congratulations on your new Linde AG, Linde Gas Deutschland product. We are proud to have you as our customer and will strive to provide you with the best service and reliability in the industry.

This Operating Manual has been designed to instruct you on the correct use and operation of your Linde AG, Linde Gas Deutschland product. Your satisfaction with this product and its safe operation is our ultimate concern. Therefore please take the time to read the entire manual, especially the Safety Precautions. They will help you to avoid potential hazards that may exist when working with this product.

Read and understand this entire Manual and your employer's safety practices before installing, operating, or servicing the equipment. While the information contained in this Manual represents the Manufacturer's best judgement, the Manufacturer assumes no liability for its use.

Machine Ryval 40 PLASMA PFC ovo is designed for cutting metal on the basis of modern technology cutting material through a thin beam plasma gas.

Ryval 40 PLASMA PFC ovo is equipped by Power Factor Correction (PFC), which allows operation on single phase voltage networks 110 V – 230 V.

Ryval 40 PLASMA PFC ovo is designed for high-quality cutting of materials up to 20 mm thick carbon steel (for more information, see instructions below). Productive cutting of carbon steel can be to a thickness of 12 mm. At lower demands on the quality of the cut can be cut through (separate) the material thickness to 25 mm.

## **2. SAFETY INSTRUCTIONS AND WARNINGS**

1. OPERATION AND MAINTENANCE OF PLASMA ARC EQUIPMENT CAN BE DANGEROUS AND HAZARDOUS TO YOUR HEALTH.
2. Plasma arc cutting produces intense electric and magnetic emissions that may interfere with the proper function of cardiac pacemakers, hearing aids, or other electronic health equipment. Persons who work near plasma arc cutting applications should consult their medical health professional and the manufacturer of the health equipment to determine whether a hazard exists.
3. Once the packing has been opened, make sure that the machine is not damaged. If in any doubt, call the service centre.
4. This equipment must only be used by qualified personnel.
5. During installation, any electric work must only be carried out by trained personnel.
6. The machine must be used in a dry place with good ventilation.
7. Make sure that no metal dust can be drawn in by the fan inside the machine, as this could cause damage to the electronic circuits.
8. It is prohibited to connect more than one INVERTER generator in series or in parallel.
9. When installing the machine, follow the local regulations on safety.
10. The position of the machine must allow easy access by the operator to the controls and connectors.
11. When the cutting machine is operating, all its covers and doors must be closed and well fixed.
12. Do not expose the cutting machine to direct sunlight or to heavy rain. This equipment conforms to protection rating IP23S.
13. The operator must wear gloves, clothes, shoes, and a helmet or a welder's helmet, which protect and are fire-resistant in order to protect him against electric shock, flashes and sparks from cutting.
14. The operator must protect his eyes with safety visor or mask designed for welding, fitted with standard safety filters. He should also be aware that during plasma cutting ULTRAVIOLET RADIATION is emitted. Therefore it is vital that his face is also protected from radiation. Ultraviolet rays produce the same harmful effect as sun burning on unprotected skin.
15. The operator is obliged to warn anyone near the cutting area of the risks that cutting involves and to arrange to provide adequate protection equipment.
16. Keep all fumes and gases from the breathing area.
17. Keep your head out of the fume plume.
18. Use an air-supplied respirator if ventilation is not adequate to remove all fumes and gases.
19. The kinds of fumes and gases from the plasma arc depend on the kind of metal being used, coatings on the metal, and the different processes. You must be very careful when cutting or welding any metals which may contain

one or more of the following:

Antimony	Chromium	Mercury
Nickel	Cobalt	Arsenic
Barium	Copper	Selenium
Beryllium	Lead	Silver
Cadmium	Manganese	Vanadium

20. Always read the Material Safety Data Sheets (MSDS) that should be supplied with the material you are using. These MSDSs will give you the information regarding the kind and amount of fumes and gases that may be dangerous to your health.
21. It is very important to arrange for sufficient ventilation, especially when cutting in enclosed spaces. We suggest using suitable fume extractors to prevent the risk of intoxication by fumes or gas generated by the cutting process.
22. Noise can cause permanent hearing loss. Plasma arc processes can cause noise levels to exceed safe limits. You must protect your ears from loud noise to prevent permanent loss of hearing.
23. To protect your hearing from loud noise, wear protective ear plugs and/or ear muffs. Protect others in the workplace.
24. Noise levels should be measured to be sure the decibels (sound) do not exceed safe levels.
25. The operator must ensure all flammable materials are removed from the work area to avoid any risk of fire.
26. The operator must NEVER cut containers that have previously contained petrol, lubricants, gas or similar flammable materials, even if the container has been empty for a considerable time. THERE IS A VERY HIGH RISK OF EXPLOSION.
27. The operator must be aware of all the special regulations which he needs to conform to when cutting in enclosed spaces with a high risk of explosion.
28. To prevent electric shock, we strongly suggest the following rules:
  - Do not work in a damp or humid environment.
  - Do not use the machine if its cables are damaged in any way.
  - Make sure that the earthing system of the electric equipment is correctly connected and operational.
  - The operator must be insulated from the metal components connected to the return wire.
  - The earthing of the piece being worked could increase the risk of injury to the operator.
29. EN 60974-1 Standard: Open-circuit voltage. During the operation of the machine, the highest voltage, with which it is possible to come into contact, is the open-circuit voltage between the clamps. In our generator this voltage is 380V.
30. The maximum open-circuit voltage of the plasma machines is established

by national and international standards (EN 60974-1) depending on the type of current to be used, on its waveform and on the hazards arising from the work place. These values are not applicable to the strike currents and those for stabilisation of the arc that could be above it.

31. The open-circuit voltage, for as many adjustments as possible, must never exceed the values relating to the various cases shown in the following table:

Case	Working conditions	Open-circuit voltage	
1	Places with increased risk of electric shock	DC current: 113V peak value	AC current: 68V peak value and 48V effective
2	Places without increased risk of electric shock	DC current: 113V peak value	AC current: 113V peak value and 80V effective
3	Torches held mechanically with increased protection for the operator	DC current: 141V peak value	AC current: 141V peak value and 100V effective
4	Plasma cutting	DC current: 500V peak value	

32. In case 1, the dc machines with rectifier must be built in such a way that, in case of a fault developing in the rectifier (for example open circuit, short circuit or lack of power), the permitted values cannot be exceeded. The

plasma cutting machines of this type can be marked with the symbol: 

33. Before opening the machine switch off the machine and disconnect it from the power socket.
34. Only personnel authorised by this company can carry out maintenance on the machine.

## 2.1 ELECTROMAGNETIC COMPATIBILITY (EMC)

- This machine conforms to EN 60974-10 standard. However, the electromagnetic emissions generated could prove not be compatible with the maximum permitted levels for some classes of electrical equipment, such as the following:
  - Domestic electronic appliances (radios, TVs, videos, telephones, burglar alarms, etc.).
  - Computers, robots, electro-medical instruments and life-support systems.
  - Radio-television transmitters and receivers.
  - Pacemakers and hearing aids.
  - All very sensitive electrical equipment.
- The operator is responsible for the installation and use of the cutting machine. If there should be any fault in operations of other systems located

in the immediate vicinity of the generator, we recommend suspending operations and consulting the manufacturers.

## 2.2 PROTECTIVE UTILITIES

1. Welding helmet with filter shade at least 10
2. Welding gloves
3. Welding apron and cloth
4. Welding boots

## 2.3 RISK OVERVIEW

1. Risk of electric shock.
2. Ultraviolet light and light radiation
3. Risk of inhaling gas fumes and dust particles
4. Burns
5. Noise



### NOTE

1. It is forbidden to operate a machine with damaged insulation of the cutting torch or supply cable.
2. Never operate the machine taken down or damaged covers.
3. It is forbidden to operate the machine in wet environments and outdoors in rain or snow.
4. Ensure proper grounding clamping pliers, which also reduces the risk of electric shock.
5. Use prescribed protective utilities, keep them dry.
6. Plasma arc cutting produces intense electric and magnetic emissions that may interfere with the proper function of cardiac pacemakers, hearing aids, or other electronic health equipment. Persons who work near plasma arc cutting applications should consult their medical health professional and the manufacturer of the health equipment to determine whether a hazard exists.
7. Never aim the torch against the eyes, body or other person.

## 3. CONDITIONS OF USE

1. This equipment must only be used by qualified personnel.
2. During installation, any electric work must only be carried out by trained personnel.
3. Do not expose the plasma machine to direct sunlight or to rain or snow. This equipment conforms to protection rating IP23S.
4. Place the machine the way that the cooling air can enter the vents without restriction to. It is necessary to ensure that no impurities, especially metal particles, are not drawn into the machine.
5. Cutting machine in terms of interference suppression is intended primarily

for industrial premises. In the case of use of other areas may be need for special measures (see EN 60974-10).

6. The machine must be protected against

- a) moisture and rain and snow
- b) mechanical damage
- c) draft and any ventilation of neighbouring machine
- d) excessive overloading - crossing technical parameters
- e) rough handling

#### 4. TECHNICAL DATA

Ryval 40 PLASMA PFC		Unit		
Method			Plasma cutting	
Mains voltage		V/Hz	1 x 110/50-60	1x230/50-60
Mains protection		A	20 @	16 @
Max. effective current $I_{1\text{eff}}$		A	19,9	14,8
Cutting current range		A/V	20/88,0 - 30/92,0	20/88,0 - 40/96,0
Open-circuit voltage $U_{20}$		V	480	
Cutting current (DC=100%) $I_2$		A	---	20
Cutting current (DC=60%) $I_2$		A	23	26
Cutting current (DC=x%) $I_2$		A	35%=30	40%=40
<b>Max. Productive cutting thickness - carbon steel</b>		<b>mm</b>	<b>8</b>	<b>12</b>
Max. Cutting thickness - carbon steel		mm	15	20
Quality cutting thickness	Carbon steel	mm	10	15
	Stainless steel	mm	8	12
	Aluminium	mm	6	10
	Copper	mm	3	4
Working pressure		bar	4,5	
Max. Input pressure		bar	7,5	
Air consumption		l/min	119	
Arc ignition			pneu-mechanic	
Current regulation			Continuous	
Protection			IP 23S	
Standards			EN 60974-1	
Dimensions (w x l x h)		mm	215 x 470 x 387	
Weight		kg	16,8	



## 5. OPERATOR CONTROLS

### 5.1 FRONT AND REAR PANELS

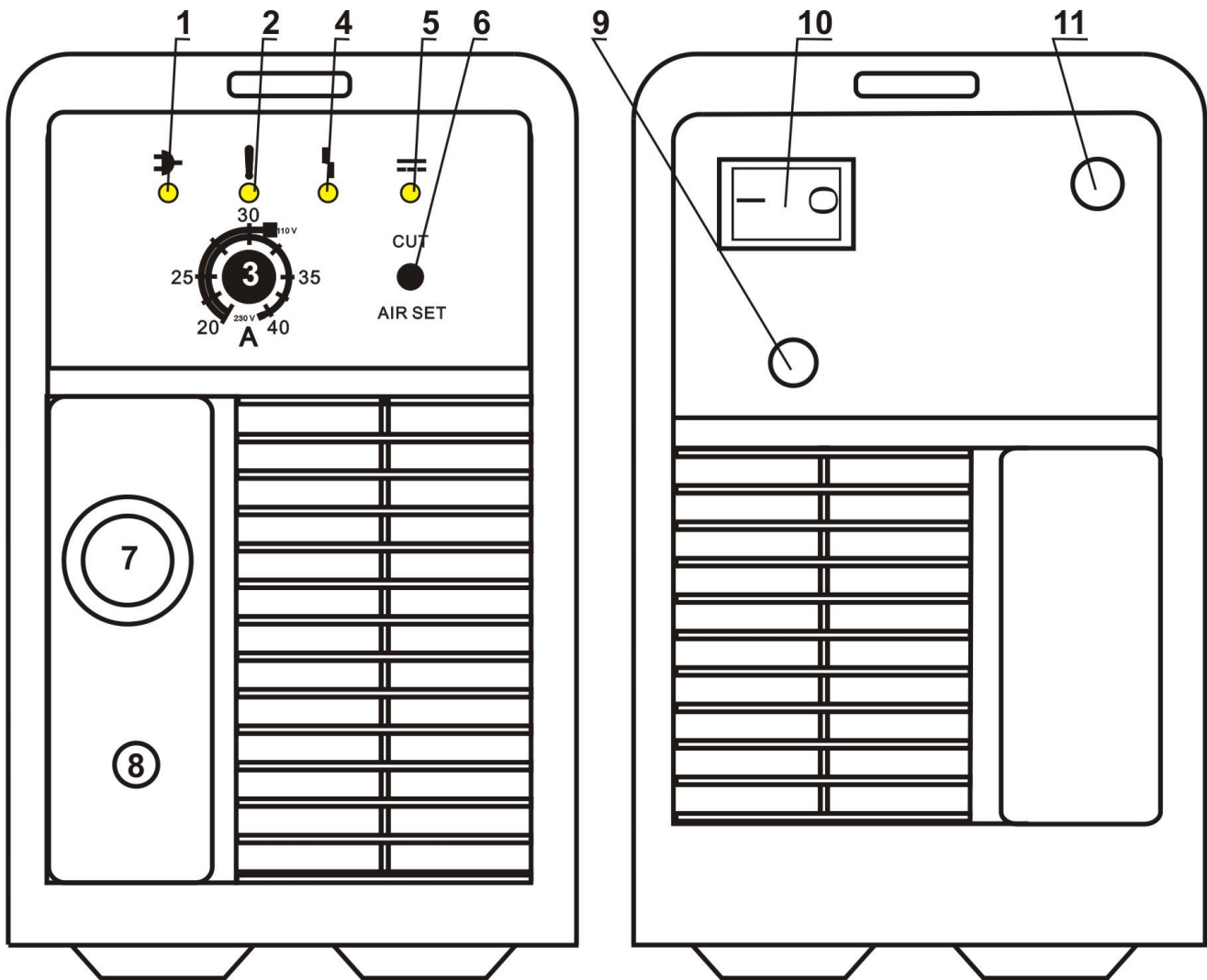


Fig . 1 Main parts

Pos.	Description
1	LED ON when the machine is switched on by the mains switch
2	LED. If the LED illuminates the thermo-switch is disconnected. In such a case leave the machine on to cool down. Second warning is when the mains voltage is over 270 V.
3	Cutting current potentiometer
4	LED Error <ol style="list-style-type: none"> <li>1. LED illuminates and the air valve regularly opens and closes - there is a shortcut among the shield cup and the cutting tip.</li> <li>2. LED illuminates and the air valve regularly opens and closes - the cutting tip and the electrode are not fitted properly.</li> <li>3. LED flashes – there is not shield cup or the shield cup is</li> </ol>

	not fitted properly. 4. LED illuminates – low air pressure
5	LED torch burning – illuminates when the torch trigger is pressed. On the torch is voltage.
6	Switch CUT – cutting mode/AIR setting the air
7	Torch central connector
8	Work leads with the plagues
9	Mains supply cable
10	ON/OFF switch
11	Air quick connector

## 6. ACCESSORIES

### 6.1 PART OF DELIVERY

1. Plasma cutting torch PARKER SCP 60 6 m with cutting tip 1,1 mm and shield cup

or

2. Plasma cutting torch ABICUT45 6 m with cutting tip 0,8 mm and shield cup 35 A

### 2.1 ON REQUEST

Pos.	Item No	Description
	SCP2550	Circular Cutting Attachment SCP 60
	742.D121.1	Circular Cutting Attachment ABICUT 45
24	5302	Air filter AT 1000
25	5304	Set for filter AT 1000
	S777a	Light Reactive Welding Helmet ALFA IN S777



Fig. 2 Circular Cutting Attachment  
ABICUT 45



Fig. 3 Air filter AT 1000

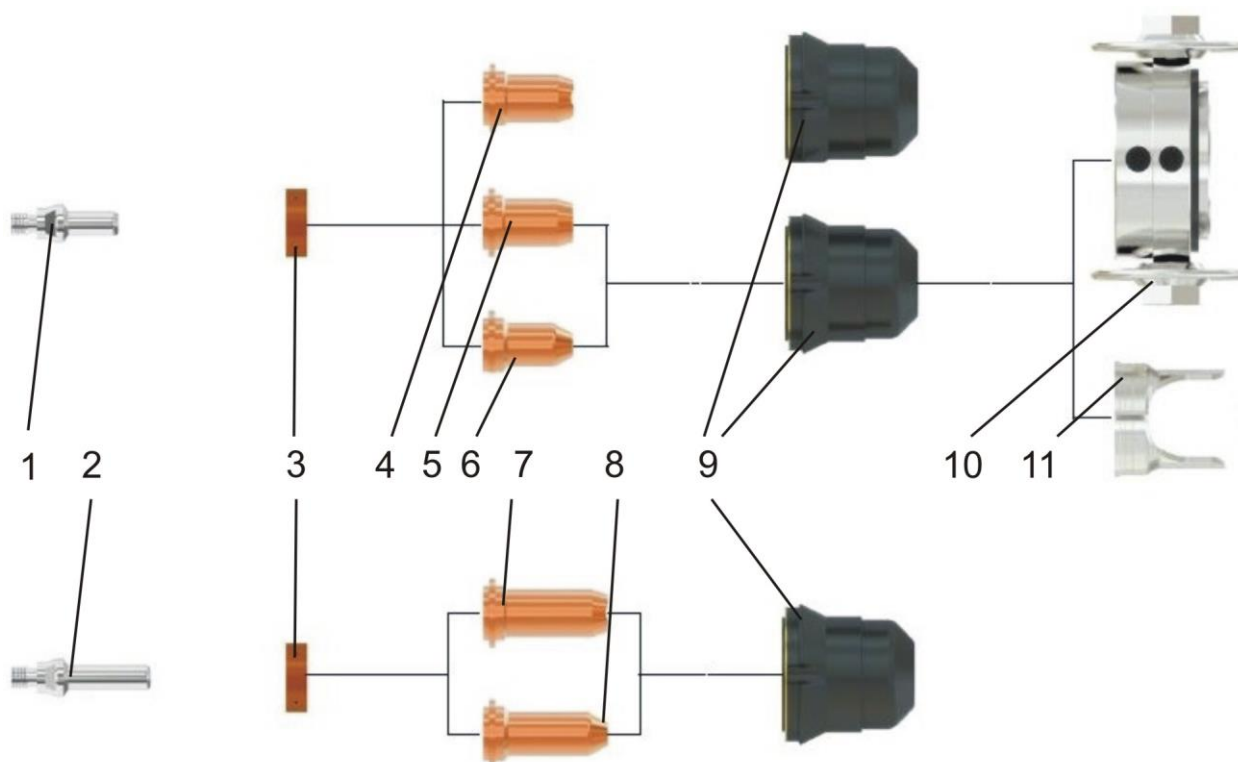


Fig. 4a Torch SCP 60

Pos.	Item No	Description
<b>1</b>	<b>SCP2504</b>	<b>Electrode</b>
2	SCP2504E	Electrode Long
<b>3</b>	<b>SCP2506</b>	<b>Air diffuser</b>
4	SCP2522-09	Cutting Tip 0,9 standard drážka
<b>5</b>	<b>SCP2524-10</b>	<b>Cutting Tip 1,0 standard</b>
6	SCP2520-06	Cutting Tip 0,65 standard
6	SCP2520-08	Cutting Tip 0,8 standard
7	SCP2522-09E	Cutting Tip 0,9 long drážka
8	SCP2520-06	Cutting Tip 0,65 long
8	SCP2520-08	Cutting Tip 0,8 long
<b>9</b>	<b>SCP2530-6</b>	<b>Shield Cup, 6 holes</b>
9	SCP2530-6L	Shield Cup, 6 holes, max. life
10	SCP2551	Cutting Buggy SCP 60
<b>11</b>	<b>SCP2540</b>	<b>Double Pointed Spacer SCP 60</b>

Note – the bold items are equipped on the torch

#### Recommended starting kit for the Torch SCP 60

Pos.	Item No	Description	pc
------	---------	-------------	----

1	SCP2504	Electrode	3
6	SCP2520-06	Cutting Tip 0,65 standard	1
6	SCP2520-08	Cutting Tip 0,8 standard	1
4	SCP2522-09	Cutting Tip 0,9 standard drážka	1
5	SCP2524-10	Cutting Tip 1,0 standard	1
2	SCP2504E	Electrode Long	1
7	SCP2522-09E	Cutting Tip 0,9 long drážka	1
12	SCP2540	Double Pointed Spacer SCP 60	1

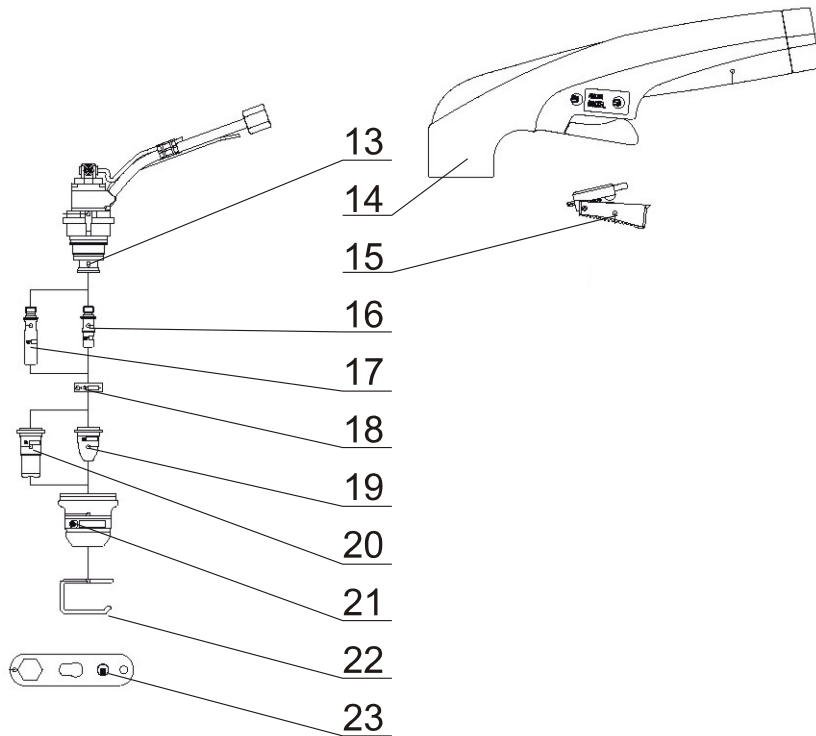


Fig. 4b Torch ABICUT 45

Pos.	Item No	Description
<b>13</b>	<b>748.0020.1</b>	<b>Torch body ABI25/45</b>
<b>14</b>	<b>748.0053.1</b>	<b>Handle ABI25/45</b>
<b>15</b>	<b>185.0005</b>	<b>Switch ON/OFF</b>
<b>16</b>	<b>748.0032.10</b>	<b>Electrode standard ABI25/45</b>
17	748.0048.10	Electrode Long ABI25/45
<b>18</b>	<b>748.0033.2</b>	<b>Air diffuser ABI25/45</b>
19	748.0034.10	Cutting Tip 0,65 Standard ABI25/45
<b>19</b>	<b>748.0035.10</b>	<b>Cutting Tip 0,8 Standard ABI25/45</b>
19	748.0061.10	Cutting Tip 1,0 Standard ABI25/45
20	748.0049.10	Cutting Tip 0,9 Long ABI25/45
<b>21</b>	<b>748.0052.2</b>	<b>Shield Cup ABI 45-35A</b>

21	748.0043.2	Shield Cup ABI45- 45A
22	748.0050.5	Standoff Guide ABI25/45
<b>23</b>	<b>748.0059.1</b>	<b>Multi key ABI25/45</b>
	<b>748.0057.1</b>	<b>Cable bundle ABI45</b>

Note – the bold items are equipped on the torch

Recommended starting kit for the Torch ABICUT 45:

Pos.	Item No	Description	pc
	748.START	Starting Kit for ABICUT 45	
		Content:	
16	748.0032.10	Electrode standard ABI25/45	2
17	748.0048.10	Electrode Long ABI25/45	1
19	748.0035.10	Cutting Tip 0,8 Standard ABI25/45	4
19	748.0061.10	Cutting Tip 1,0 Standard ABI25/45	1
20	748.0049.10	Cutting Tip 0,9 Long ABI25/45	2
21	748.0043.2	Shield Cup ABI45 45A	1
22	748.0050.5	Standoff Guide ABI25/45	1

## 2.2 COMMENTS ON CONSUMABLES

### 2.2.1 Shield cups – Retaining cups

#### PARKER SCP 60

1. You can choose from two shield cups. Both have 6 holes for the compressed air.
2. For longer life particularly when cutting at 40 A we suggest to use nozzle SCP2530-6L.

#### ABICUT45

1. You can choose from two shield cups. They differ in the number of holes for compressed air ( 4 respectively 6 holes). It is appropriate to use shield cup 748.0052.2 (35 A) for lower power, cut would be better.
2. For maximum performance it is necessary to use shield cup 748.0043.2 (45A) with six holes for air.

### 2.2.2 Long electrode and a long cutting tip

1. The combination of Long electrode and Long cutting tip is aimed for cutting in angles or in spaces where standard electrode cannot reach.
2. It is possible to drag the Long cutting tip directly on the cutting material up to thickness of 5.8 mm without the guiding spring. The Lifetime of the cutting tip and the electrode is reduced by 30% - 50%.

### 2.2.3 Standard electrode and standard cutting tips

## PARKER SCP 60

1. For smaller cutting thickness (carbon steel) up to 4 mm it is better to use Cutting Tip SCP2520-06, Ø 0.65 (10-20A) in combination with electrode SCP2504.
2. For cutting thicknesses from 4 to 6mm use Cutting Tip SCP2520-08, Ø 0.8 (20-30A). For cutting thicknesses from 6 to 8 mm use Cutting Tip SCP2522-09, Ø 0.9 (30-40A). For cutting thicknesses over 8 mm use Cutting Tip SCP2524-10, Ø 1,0 (40-50A).

## ABICUT45

1. It is possible to drag the standard cutting tip directly on the cutting material up to thickness of 10 mm without the guiding spring. The Lifetime of the cutting tip and the electrode is reduced by 30% - 50%.
2. It is better to use standard cutting tip 748.0034.10 0. (Cutting Tip 0,65 Standard ABI25/45) in combination with standard electrode 748.0032.10 for smaller cut thickness. Cut is narrower, better.

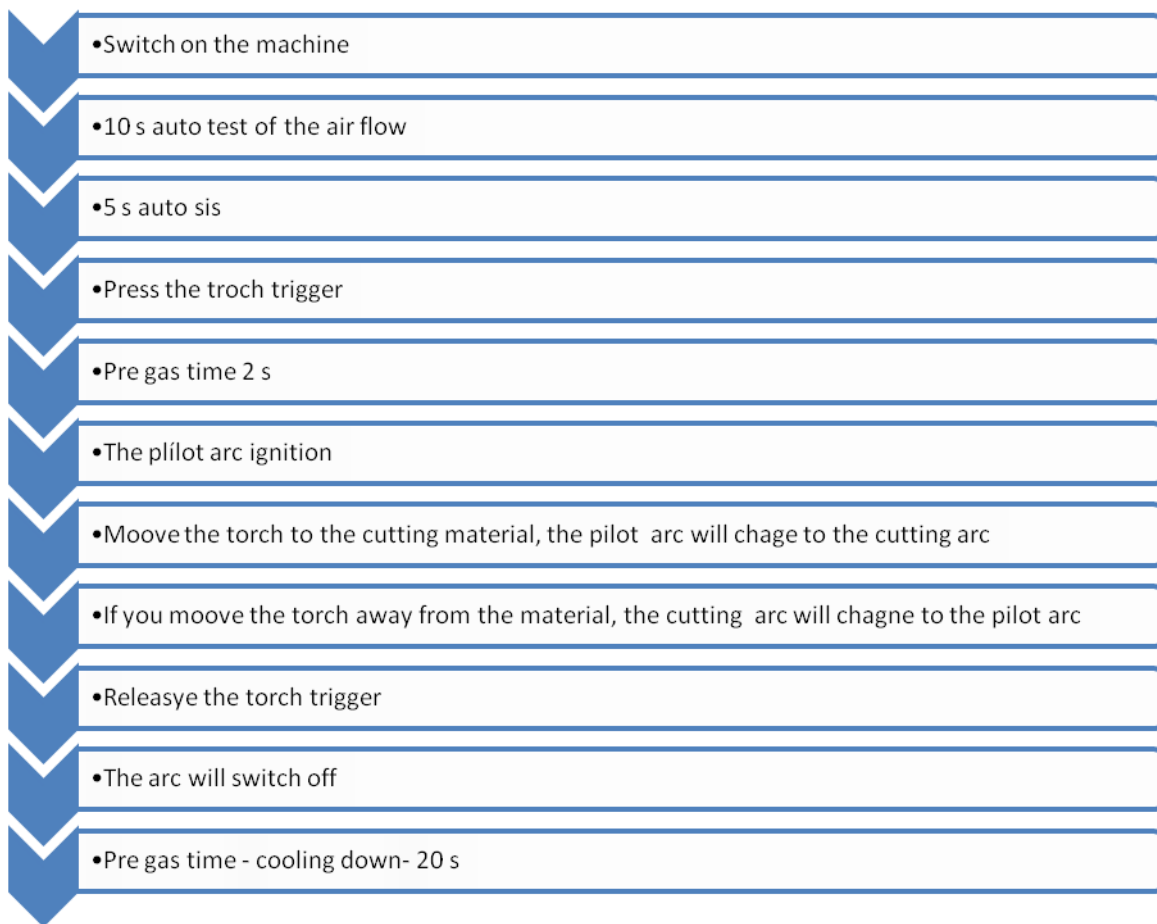
## 3. GETTING STARTED

### 3.1 FIRST STEPS



**NOTE** This equipment must only be used by qualified personnel.

1. Before beginning work is necessary to connect the machine to the mains. (1 x 110-230 V, 50/60 Hz).
2. Check completeness of the mounted cutting torch.
3. Connect the compressed air quick connector to the connector on the rear wall of the machine.
4. Connect the mains plug to the mains.
5. After turning the power switch pos. **10** the LED "ON" pos. **1** must illuminate.
6. Connect the work lead cable to the material being cut.
7. Check the input pressure. The max. input pressure is 7,5 bar, the minimal input pressure is 4 bar.
8. Set potentiometer pos **3** to the cutting power you need.
9. Fit the torch with appropriate type of cutting tip electrode and shield cup according to the selected cutting current.



### 3.2 REQUIREMENTS FOR SOURCE OF COMPRESSED AIR

1. Delivered air pressure must be max. 7,5 bar and min. 4 bar.
2. Air consumption 119 l/min
3. Compressed air for the plasma must be clean and dry.
4. Pressure dew point +3 ° C
5. Maximum oil content 0.1 mg/m<sup>3</sup>
6. Maximal size of solid particles 15 microns
7. The minimal size of an air tank is 50 l
8. No additional oiling if the pressure air is permitted. That could damage the plasma machine and the cutting torch.

### 3.3 OPTIONAL AIR FILTERS

To achieve high quality cutting and to avoid serious disturbances to the torch it is highly advised to include the air filter.

Pos.	Item No	Description
24	5302	Air filter AT 1000
25	5304	Set for filter AT 1000

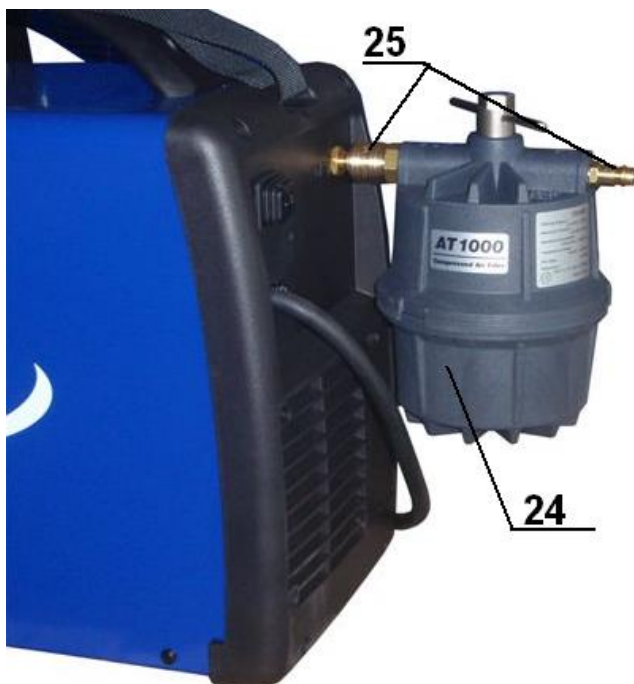


Fig. 5 Air filter AT 1000

### 3.4 CUTTING

1. Press the torch trigger. The pilot arc will ignite. Then you have to immediately attach the torch to the cut material. At this point begins to burn the main arc between the torch and the material.
2. Move the torch with a constant speed. Cutting speeds vary according to torch output amperage, the type of material being cut, and operator skill.
3. Output current setting or cutting speeds may be reduced to allow slower cutting when following a line, or using a template or cutting guide while still producing cuts of excellent quality
4. To achieve a good cutting quality make sure the distance between the tip and the material is about 2 mm. The Standoff Guide ABI25/45 pos 22 located at the end of the plasma torch guarantees the distance. At a greater distance decreases cutting power and the arc may go off. With too small distance the torch parts will be worn off faster.
5. Plasma cutting may be done in all possible positions (vertically, horizontally, overhead, vertical ascending and descending), but as far as possible choose primarily horizontal cut. In other positions the operator is increasingly threatened by flying drops of molten material.
6. We recommend starting cutting at the edge of the material. If needed to start from the centre of the material, or to cut hole into the material, slightly tilt the torch head and gradually it straighten into a vertical position so the spraying material would not damage the cutting tip (see Figure 6). This workflow must always be followed, if the thickness of material is above 3 mm.
7. In case of cutting in the corner or around the corner (see Figure 7), use the long electrode and cutting tip (pos. 17 and 20). The cutting power while



using the Long cutting tip is decreased.

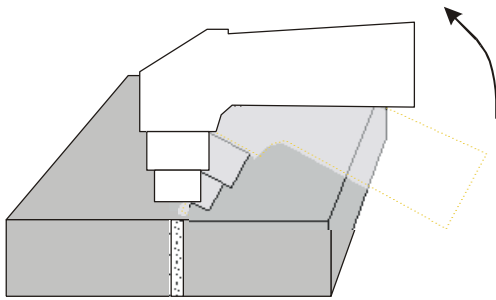


Fig. 6

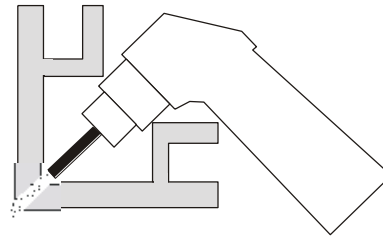


Fig. 7

### 3.5 IMPORTANT RULES

1. The pilot arc burning time should be limited only to the time necessary. It lowers the wear of the cutting tips and electrodes.
2. Never turn off the main switch immediately after finishing cutting but always leave time to run cooling cycle to cool down the torch. Immediate turn-off only in case of emergency.
3. Ensure a good el. Contact of the work lead clamps and cutting material.
4. Check and timely exchange cutting tips and the electrodes. Lifetime of these parts is only a few hours of cutting time and is highly dependent on compliance with the principles of good cutting.
5. Disconnect the machine from the mains before replacing the torch consumable parts.
6. Unplug the machine from the mains before any intervention inside the machine.
7. Ryval 40 PLASMA PFC is adapted for use with torch ABICUT 45. This combination comply with EN 60974-7 Article 10.1.4. Using any other type and design of a torch must be approved by Linde AG, Linde Gas Deutschland.
8. Imperfect capture of condensate would cause its elimination in the area of the cutting tip and it would prevent ignition of the pilot arc.

### 3.6 SOURCES OF POOR QUALITY CUTS

#### 3.6.1 Shallow penetration of the cut

1. The cutting speed is too high. Make sure the slope of the cutting arc does not exceed about 15 ° (see Figure 8).
2. High wear of the cutting tip or electrode (see Figure 9)
3. Too large thickness of material and not adequately chosen value of current and diameter of the cutting tip.
4. Bad contact between the work lead clamps and material.

#### 3.6.2 Cutting arc is unstable, goes off and "shoots"

1. Worn out cutting tip or electrode
2. High pressure

3. Impurities in the pressure air
4. not captured water condensate

### 3.6.3 Conical cut

1. If there is a false cut (see Figure 10) turn off the machine, release the shield cup and rotate the cutting tip about 1/4 and again try to cut.
2. Damaged cutting tip and electrode
3. The position of the torch is not perpendicular to the material
4. Too large distance from the cutting tip to the material.

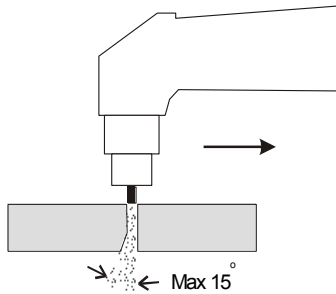


Fig. 8

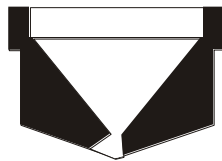


Fig. 9



Fig. 10

## 4. MAINTENANCE

1. A great care should be taken to the cutting torch. The molten material sprays while cutting. This sputter contaminates the interior space of the torch. The worn parts (consumables) of a plasma torch should be regularly maintained and timely exchanged. Regularly check the condition of diffuser channels (see diagram of the torch). If contaminated, you must clean it with a pressure air or to replace the diffuser. Poor state of the diffuser has a negative impact on the quality of cutting and causes very strong interference that may cause the collapse of the machine control electronics or influence the surrounding devices. If the cable bundle of the torch is worn out it must be replaced immediately - danger of electrical shock.
2. Disconnect the Ryval from the mains supply voltage before disassembling.
3. Special maintenance is not necessary for the control unit parts in the plasma cut machine. If these parts are damaged for any reason, replacement is recommended.



1. Do not blow air into the plasma cut during cleaning. Blowing air into the plasma cut can cause metal particles to interfere with sensitive electronic components and cause damage to the welder.
2. To clean the plasma cut, disconnect it from the mains supply voltage then open the enclosure and use a vacuum cleaner to remove any accumulated dirt and dust. The plasma cut should also be wiped clean. If necessary,

solvents that are recommended for cleaning electrical apparatus may be used.

3. Troubleshooting and repairing of Ryval equipment should only be carried out only by suitably qualified or competent person.
4. A 'competent person' must be a person who has acquired through training, qualification or experience, or a combination of them, the knowledge and skills enabling that person to safely carry out a risk assessment and repairs to the electrical equipment in question.
5. The person carrying out the servicing needs and repairs must know what to look at, what to look for and what to do.

## **5. STATEMENT OF WARRANTY**

1. In accordance with the warranty periods stated below, Linde AG, Linde Gas Deutschland guarantees the proposed product to be free from defects in material or workmanship when operated in accordance with the written instructions as defined in this operating manual.
2. Linde AG, Linde Gas Deutschland products are manufactured for use by commercial and industrial users and trained personnel with experience in the use and maintenance of electrical welding and cutting equipment.
3. Linde AG, Linde Gas Deutschland will repair or replace, at its discretion, any warranted parts or components that fail due to defects in material or workmanship within the warranty period. The warranty period begins on the date of sale to the end user.
4. If warranty is being sought, please contact your Linde AG, Linde Gas Deutschland product supplier for the warranty repair procedure.
5. Linde AG, Linde Gas Deutschland warranty will not apply to:
  - Equipment that has been modified by any other party other than Linde AG, Linde Gas Deutschland's own service personnel or with prior written consent obtained from Linde AG, Linde Gas Deutschland Service Department.
  - Equipment that has been used beyond the specifications established in the operating manual.
  - Installation not in accordance with the installation/operating manual.
  - Any product that has been subjected to abuse, misuse, negligence or accident.
  - Failure to clean and maintain (including lack of lubrication, maintenance and protection), the machine as set forth in the operating, installation or service manual.
6. Within this operating manual are details regarding the maintenance necessary to ensure trouble free operation.



7. Warranty repairs must be performed by either an Linde AG, Linde Gas Deutschland Service Centre, an Linde AG, Linde Gas Deutschland

distributor or an Authorised Service Agent approved by the company Linde AG, Linde Gas Deutschland

## 6. DISPOSAL



Only for EU countries. Do not dispose of electric tools together with household waste material.

In accordance with European Council Directive 2002/96/EC on electrical and electronic equipment waste and its implementation in accordance with national law, electric tools that have reached the end of their service life must be collected separately and returned to an environmentally

compatible recycling facility.