



***we make it easy***

- 1 -

# AIR FILTER

## AT - 1000

### OPERATING MANUAL

#### 1. BASIC INFORMATION

Filter of compressed air is designed to remove moisture and aerosol oil from the air and to capture small particles. Filter provides clean, dry and oil-free air, suitable for industrial use.

Filter must be installed as close as possible to the air pressure regulator in the direction of air flow. We don't recommended replace with this filter other types of filters. It's better add this filter to the other types of filters which are already installed. Filter AT-1000 removes moisture, aerosol oil, smoke and small particles, which pass through the air distribution.

Filter AT-1000 allows air flow at speed 1250 l/min – 2700 SCFH (75m<sup>3</sup>/h – 45 CFH) and filter is equipped with the most commonly used thread R<sup>1</sup>/<sub>4</sub> - 18 NTP endings (female).

#### 2. BASIC INDUSTRIAL USE AND RECOMMENDED SETTINGS

1. Plasma cutting – install the filter up or on the back side of the device and connect it to the air supply.
2. Spraying – install the filter downstream of the air in front of the pressure reducer.
3. Air-handling instruments of all types – install the filter in the direction of air flow in front of the pressure reducer, but against the direction of air flow from the lubricator.

General use of compressed air – install filter in the direction of air flow in front of pressure regulator.

#### 3. INSTALLATION

1. Connect quick connectors (must be purchased for a specific use) to the input and output of the filter.
2. Filter can be installed directly to the air supply or attach it to the device or to the side by means of supplied holders.
3. Attach the filter to the holder by means of supplied screws and nuts (see picture).
4. If required, install the shut-off valve against the direction of air flow from the filter.
5. Make sure, that the air pressure is less than 8,5 bars – 125 PSI.
6. Make sure, that you only use air. Avoid any other gases.

## 4. MAINTENANCE

Filter inlet is made from absorbent material, is necessary to periodically exchange the inlet.

The life of filter filling depends on the amount of moisture generated from the compressor, speed of air flow and intensity of usage.

The maximum capacity of the absorbed water is 250 gr. and must be replaced before complete saturation.

Note.: In extremely humid conditions, install the automatic dryer in front of the filter. This removes most of the water and extends the life of the filter filling.

## 5. HOW TO CHANGE THE FILTER INLET

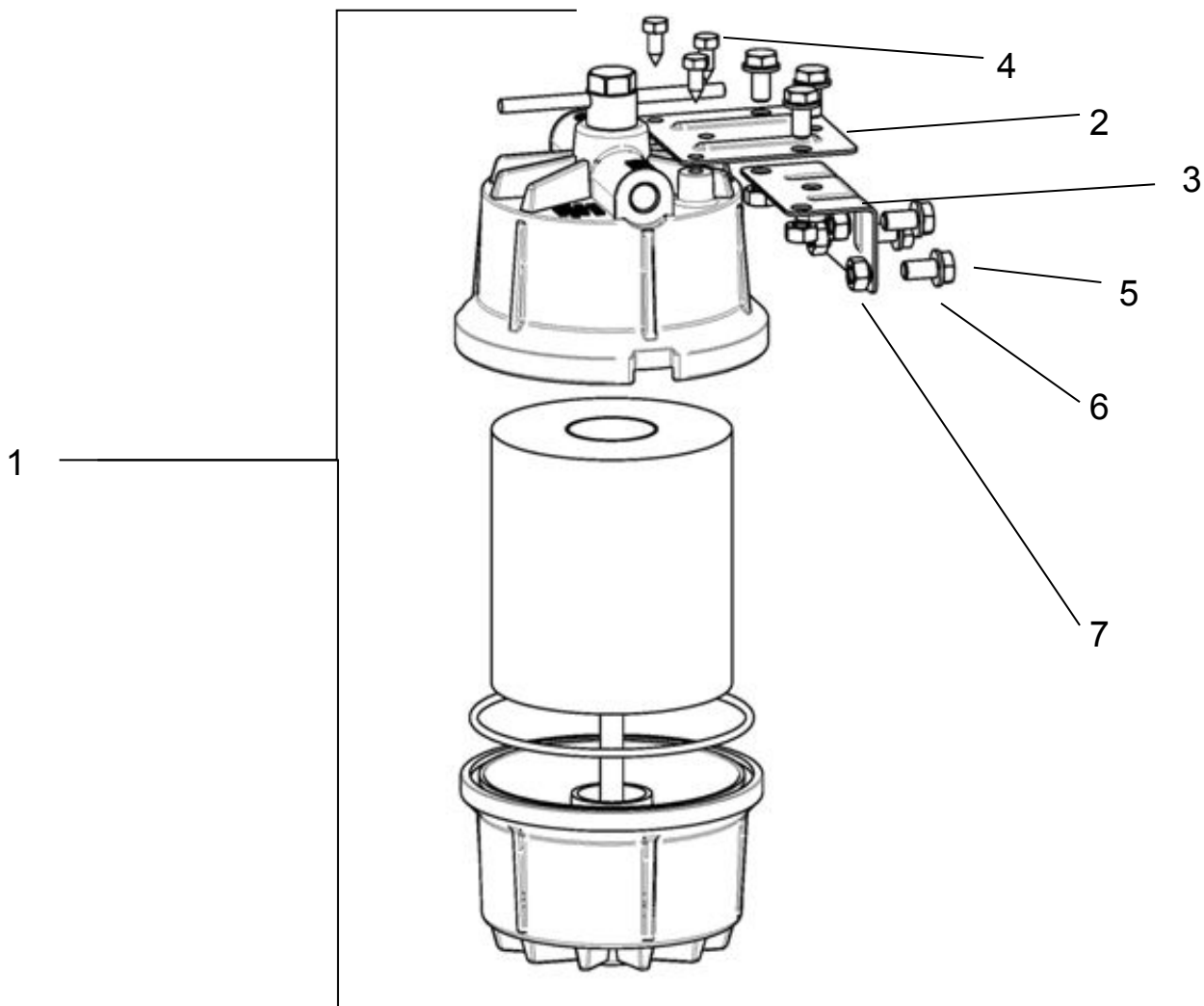
1. Remove the handle and remove the bottom part of the filter.
2. Slide out the filter inlet.
3. Clean the inside side of the filter.
4. Insert the new filter inlet to the bottom part of the filter.
5. Close the filter by screwing the handle by hand or use key 19mm or  $\frac{3}{4}$ ". Tighten with tightening torque from 10 to 20Nm.

## 6. TECHNICAL DATA

Permeability	0,25 $\mu$ m
Max. input pressure	8,5 bar
Max. flow at 80%	1250l/min
Operating temperature	-10 to +60°C
Dimensions	Ø 132 x 200 mm

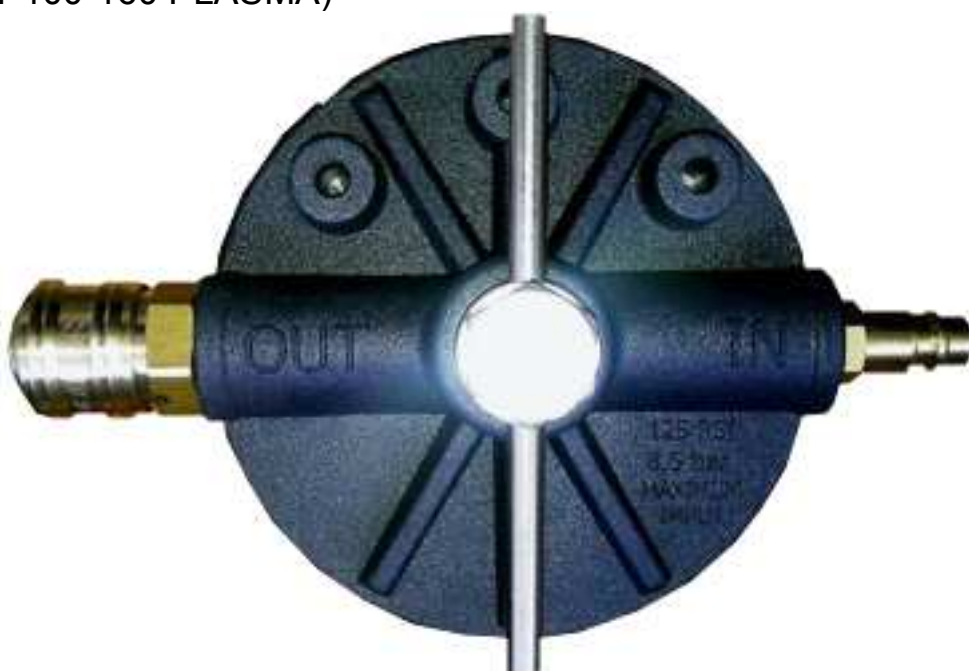
## 7. WHAT IS INCLUDED

- 1) Fully assembled air filter ready for use
- 2) Flat holder
- 3) 90° holder
- 4) 3 self-tapping screws (to attach the holder to the filter)
- 5) 6 screws M8 x 16
- 6) 6 flat washers Ø 8 mm
- 7) 6 nuts M8



### 8. EXAMPLE OF THE FILTER CONNECTION FOR PLASMA PEGAS FROM ALFA IN A.S.

Picture of completed filter AT 1000 with set 5304 (Set for filter AT 1000 to P100-160 PLASMA)



Picture of completed filter AT 1000 with set 5306 (Set for filter AT 1000 to P 40 PLASMA)



### 8.1 Caution

In case damaging the teflon insulation of quick connectors, there may be air leakage.

## 9. WARRANTY AND AFTER WARRANTY REPAIRS

1. Warranty repairs are carried out by the manufacturer or an authorized service organization.
2. It is similarly in case of repairs after warranty.
3. Complaints report at the phone number 563 034 625 or 568 840 009, e-mail: [servis@alfain.eu](mailto:servis@alfain.eu).